

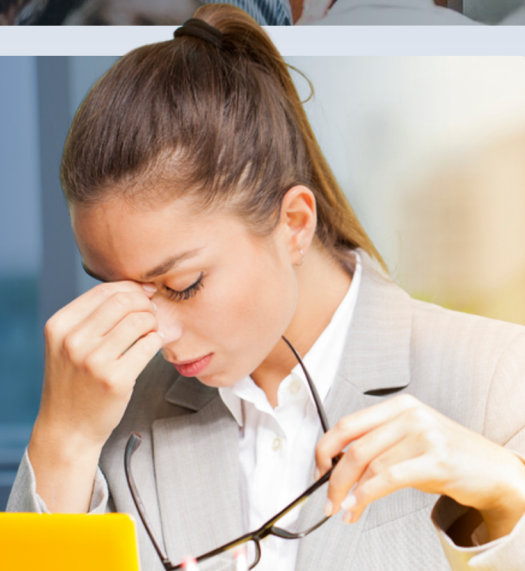
Reliable Event WiFi for Meetings & Events

When WiFi fails, attendees complain, exhibitors lose leads, and everyone looks to the planner for answers. Provide WiFi delivers reliable, high-capacity internet and WiFi so your meetings and events run smoothly and your stakeholders stay happy.



The Connectivity Problem for Planners

Meeting and event planners are expected to deliver flawless experiences, yet are often handed “best effort” venue WiFi that was never designed for today’s connected events. Session engagement apps, live polling, hybrid streaming, exhibitor demos, and cashless payments all depend on stable connectivity. When the network slows down or crashes, your attendees blame the event, not the infrastructure. Your reputation, renewals, and sponsorship revenue are all at risk.



Built for the Ways You Use WiFi

Every event type uses WiFi differently. Provide WiFi designs networks around your specific use cases and success metrics rather than a generic “one size fits all” approach.

- **Meetings & conferences:** Reliable WiFi for event apps, live Q&A, and hybrid sessions.
- **Trade shows & expos:** High-capacity WiFi for registration, demos, and payments.
- **Galas & special events:** Site-wide coverage for staff, media, and guests—any venue.

What Provide WiFi Delivers

Provide WiFi specializes in temporary internet and managed WiFi designed specifically for meetings, conferences, and events. Our team handles the connectivity end to end so you can stay focused on content, logistics, and client experience.

Turnkey temporary internet

We bring in dedicated connectivity (such as bonded cellular or satellite) for your event, even when the venue’s service is limited or unreliable.

High-capacity WiFi for attendees

Networks are engineered to support dense crowds using multiple devices, with enough bandwidth for event apps, email, social media, and basic streaming.

Priority WiFi for critical functions

Segmented and prioritized access for registration, production, streaming, exhibitors, and VIP areas so essential services stay online even during peak usage.

On-site monitoring and support

Technicians monitor the network in real time during your event, quickly resolving issues before they impact the attendee experience.

Why Planners Choose Provide WiFi

Provide WiFi is built around the needs of planners, not just IT teams. The goal is to remove connectivity as a risk from your event plan.

- ✓ **Reduced risk and stress:** Clear capacity planning, documented coverage maps, and proactive monitoring mean fewer last-minute surprises and fire drills.
- ✓ **A single, accountable partner:** One team responsible for design, setup, monitoring, and support so you always know who to call.
- ✓ **Easy to explain to stakeholders:** simple, outcomes-focused language and clear options make it easy to justify upgraded WiFi to clients, sponsors, and internal teams.
- ✓ **Scalable from small to large events:** solutions that work for 100-person meetings up through large conferences and multi-day events.



WiFi should enhance your event, not threaten it. Make connectivity one of your most reliable elements instead of a hidden risk.

Visit [ProvideWiFi.com](https://providewifi.com) to share your event dates, venue, estimated attendance, and connectivity needs, and receive a customized proposal. You will get a clear, planner-friendly plan for how WiFi will support your agenda, exhibitors, stakeholders, and attendees.

